



JUEGO DE EXTRACTORES 9087 / PULLER SET 9087

Contenido / Content

Con este juego de extractores puede obtener los siguientes modelos /
Following pullers can be assembled:

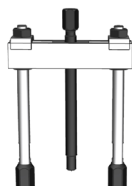


2301-2302

+

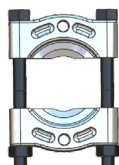


1010
160x155mm



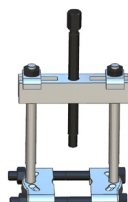
1110
190x195 mm

+

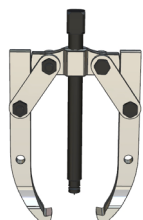


1204B
110x110mm

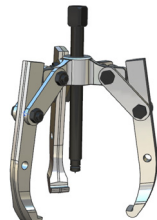
=



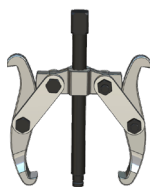
1110-1204B



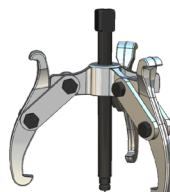
1307L
225x240mm



1307LT
225x240mm



1407
125x200mm



1404T
125x200mm

Instrucciones / Instructions



NO USAR LLAVES DE IMPACTO / DO NOT USE POWER TOOLS

- 1- Engrase los husillos. / *Make sure the spindle is cleaned and greased before use.*
- 2- Compruebe que el eje esta punteado, si no utilice un protector de punto. / *Make sure the axe has a centre hole. If not use a point protector.*
- 3- Asegúrese de que las patas o alargaderas estén perfectamente centradas. / *Make sure the jaws are evenly spread*
- 4- Realice la fuerza girando el husillo, NO golpee el husillo. / *Apply pulling force by turning the spindle. Never hit the spindle and not use power impact wrench.*
- 5- Mantenga las normas de higiene y seguridad en el trabajo. / *Keep the standards of hygiene and safety at work .*
- 6- Utilice los elementos de protección individual obligatorios. / *Always wear suitable personal protective equipment.*

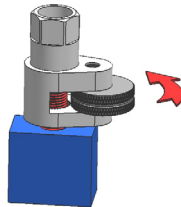
Instrucciones 2301 y 2302 Extractor de espárragos

Instructions 2301 y 2302 STUD EXTRACTOR



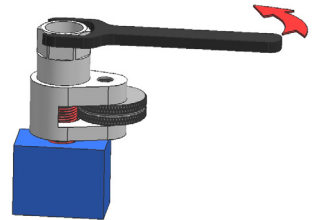
Introducir el espárrago dentro del extractor.

Place the extractor.



Bloquee el espárrago con la excéntrica moleteada.

Block the broken screw.



Tire con una llave.

Extract with a wrench.